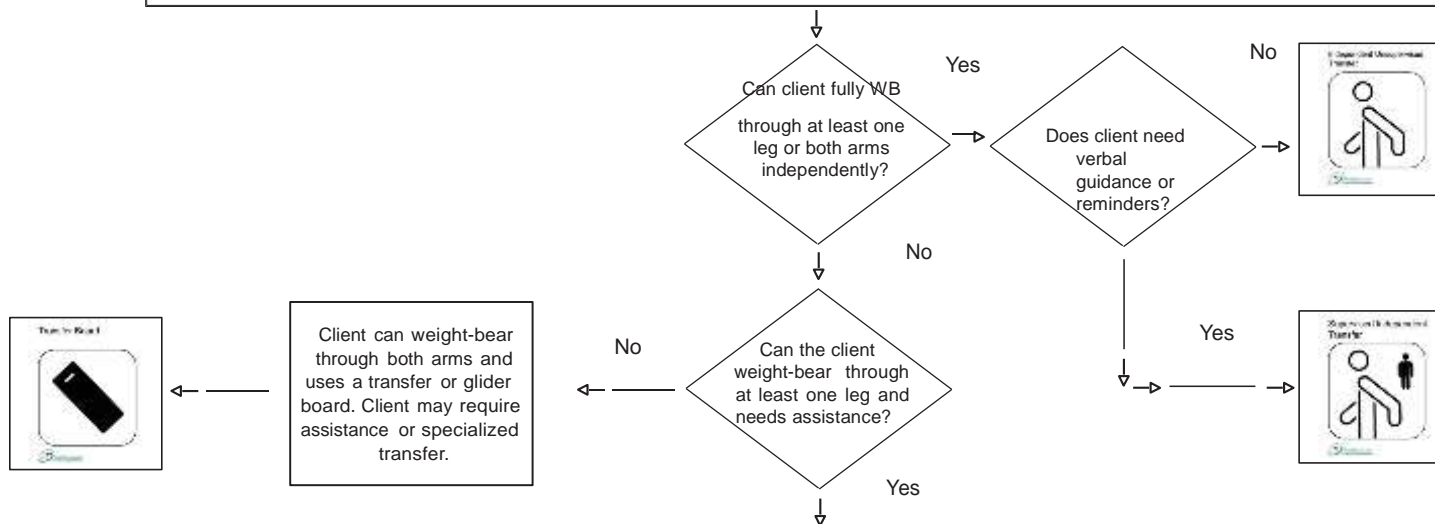


# Appendix U – Client Mobility Assessment Algorithm for Transfers

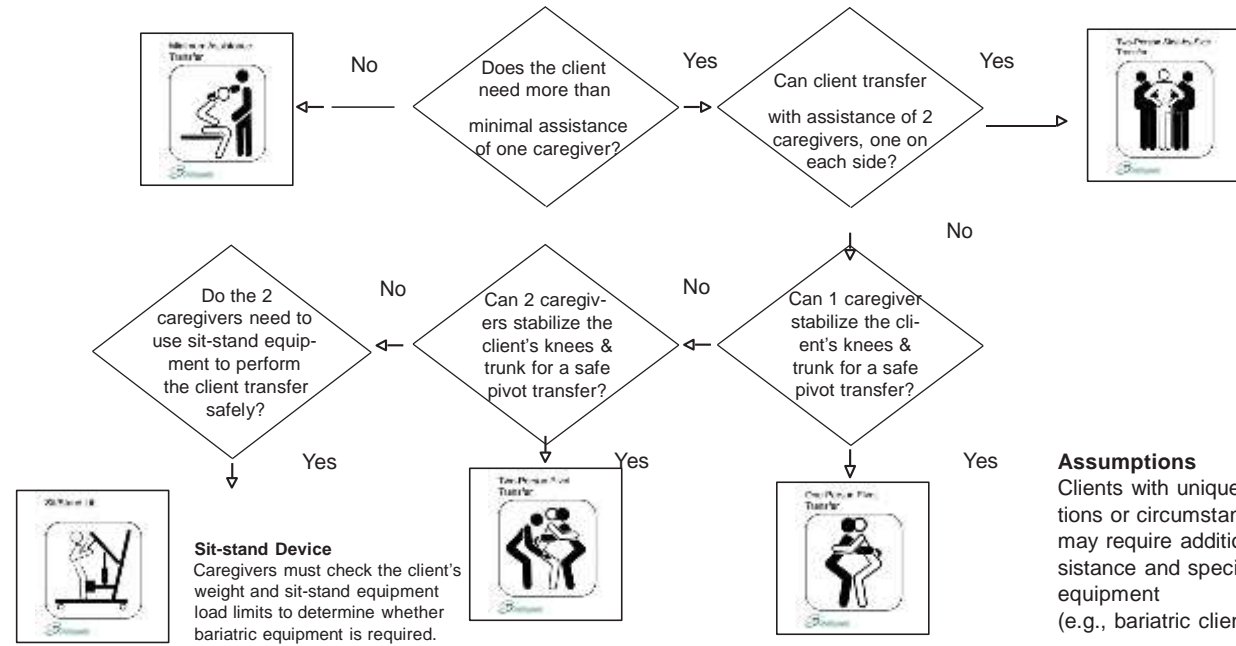
The client mobility assessment determined that: The client is able to follow directions and co-operate; has sufficient range of motion, strength and coordination in the trunk, arms and legs to allow a safe transfer; and is able to weight-bear (WB) through at least one leg or both arms.

The next step is to determine a safe type of transfer method.



Determine a safe transfer procedure based on the type and amount of assistance required. Assistive devices may be used. Bariatric clients may require additional assistance/equipment.

Sample Assistive Devices



**Assumptions**  
Clients with unique conditions or circumstances may require additional assistance and specialized equipment (e.g., bariatric clients).